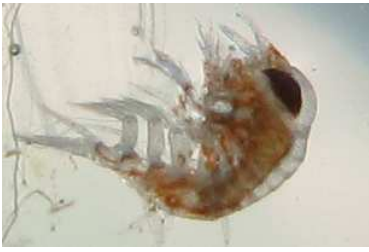


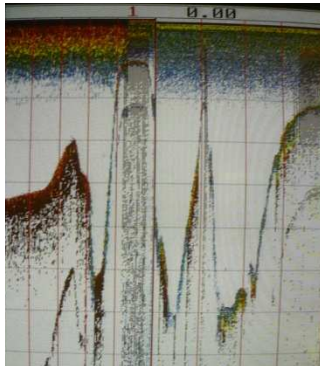
Monday 4 May 2009 JD 124

We are continuing the large scale filament survey, at position 19° 47.69 N 017° 38.40 W, travelling at 6.5 knots with 18 knot NNE winds. The water is very green suggesting high chlorophyll concentrations, sea surface temperature is 17.0 °C, salinity is 35.73, air temperature is 16.8 °C, barometric pressure is 1012 and underway fluorescence is 1.0 fluorescence units. At 11:00 we recovered the MVP and deployed CTD #51 to 350m to collect salinity samples to check the MVP salinity sensor which appears to be drifting. We also collected water for measurement of background



helium concentrations and some extra experiments to test the linearity of plankton growth during 24 hour incubations. We then deployed the three

nets (Apstein, Bongo and 700 µm) and at 13:26 resumed the MVP survey. The 700 µm net sample is collected for Dr Claudia Castellani at the Sir Alister Hardy Foundation for Ocean Science (SAHFOS) in Plymouth, and contained a rich

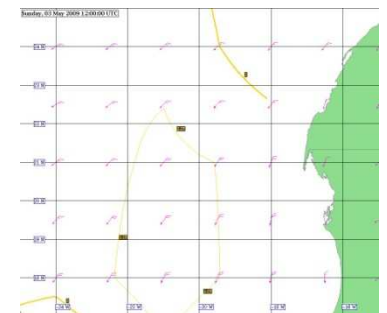
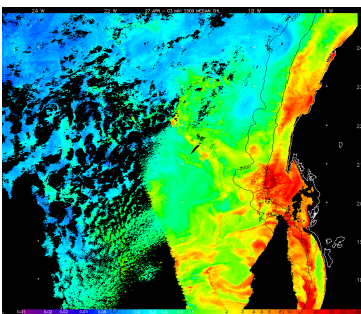


soup of large zooplankton (see photos 1 – of a Hyperiid and 2 - of a Chaetognath possibly *Sagitta enflata* and a Eucalanus copepod – photos courtesy Vas Kitidis and preliminary identification from Claudia). The scientists continue to catch up with instrument calibrations, sample analysis, and report writing. Unfortunately the underway oxygen optode has developed a fault and so Ian spent some time today repairing that. During the net and CTD deployments we were ‘buzzed’ by a fishing vessel which came over to check what sort of ‘fish’ we were collecting in the plankton nets (photo 3). The large scale



filament survey continued inshore along the 100m depth contour, and the mountainous seabed topography prevented the safe deployment of the MVP (photo 4 of echo sounder trace giving a maximum depth of a worrying 0m). Eventually as the depth became more constant (around 50m), the MVP was able to dive to a maximum of 20m.

During this May Bank Holiday weekend, as on every other day, the staff at NEODAAS (National Earth Observation Data Acquisition and Analysis Service) at Plymouth Marine Laboratory have processed and sent images of satellite derived sea surface temperature and chlorophyll to the ship, along with model output of predicted wind speed and direction and wave height, and Ed Blockley at the Meteorological Office in Exeter



has sent daily ocean forecasts of temperature, salinity, mixed layer depth and ocean currents. These images and forecasts have been invaluable in visualizing the size, shape and variability in position of the filament we are here to study. We are very grateful to Peter Walker, Ben Taylor and Jane Netting at NEODAAS and Ed Blockley at the Met Office (figures 1 and 2).