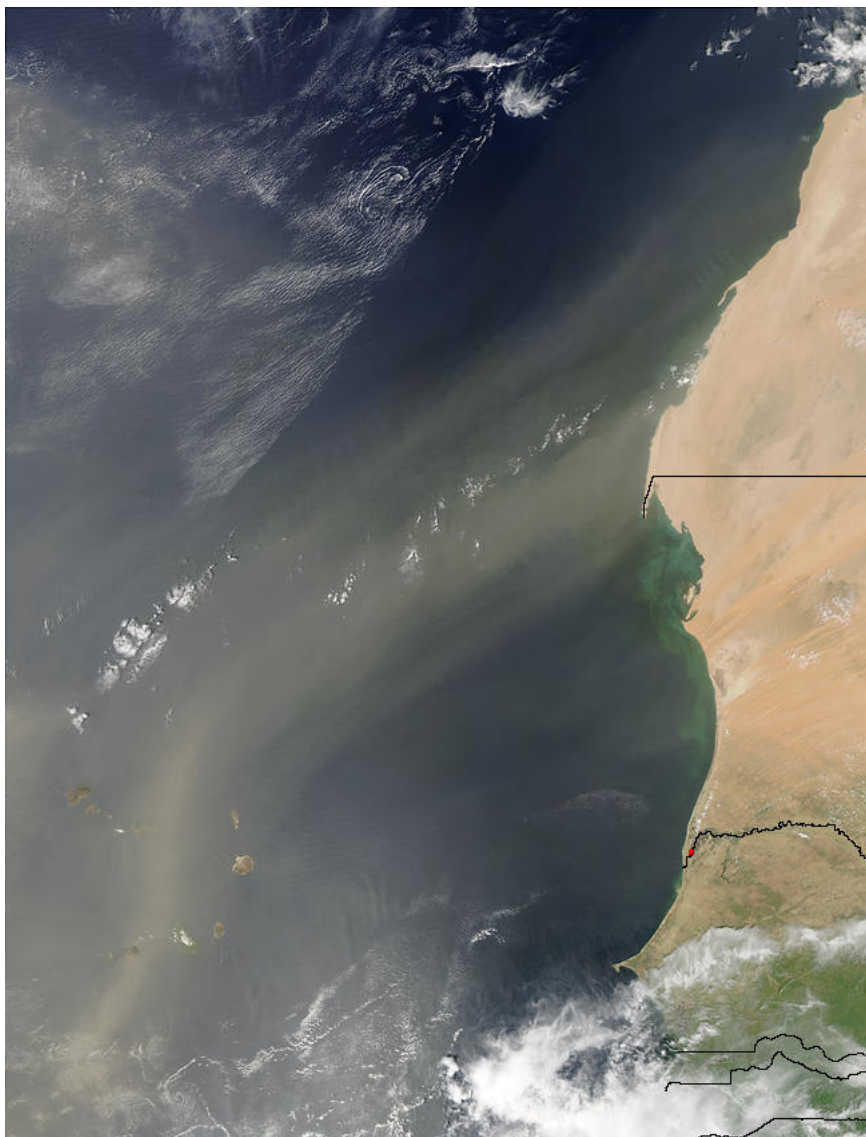
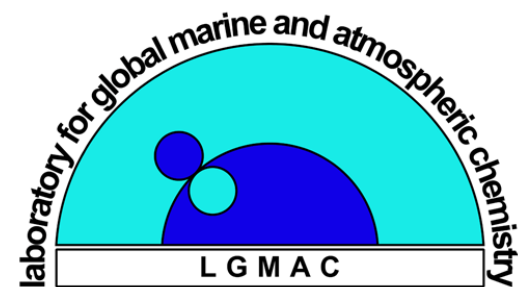


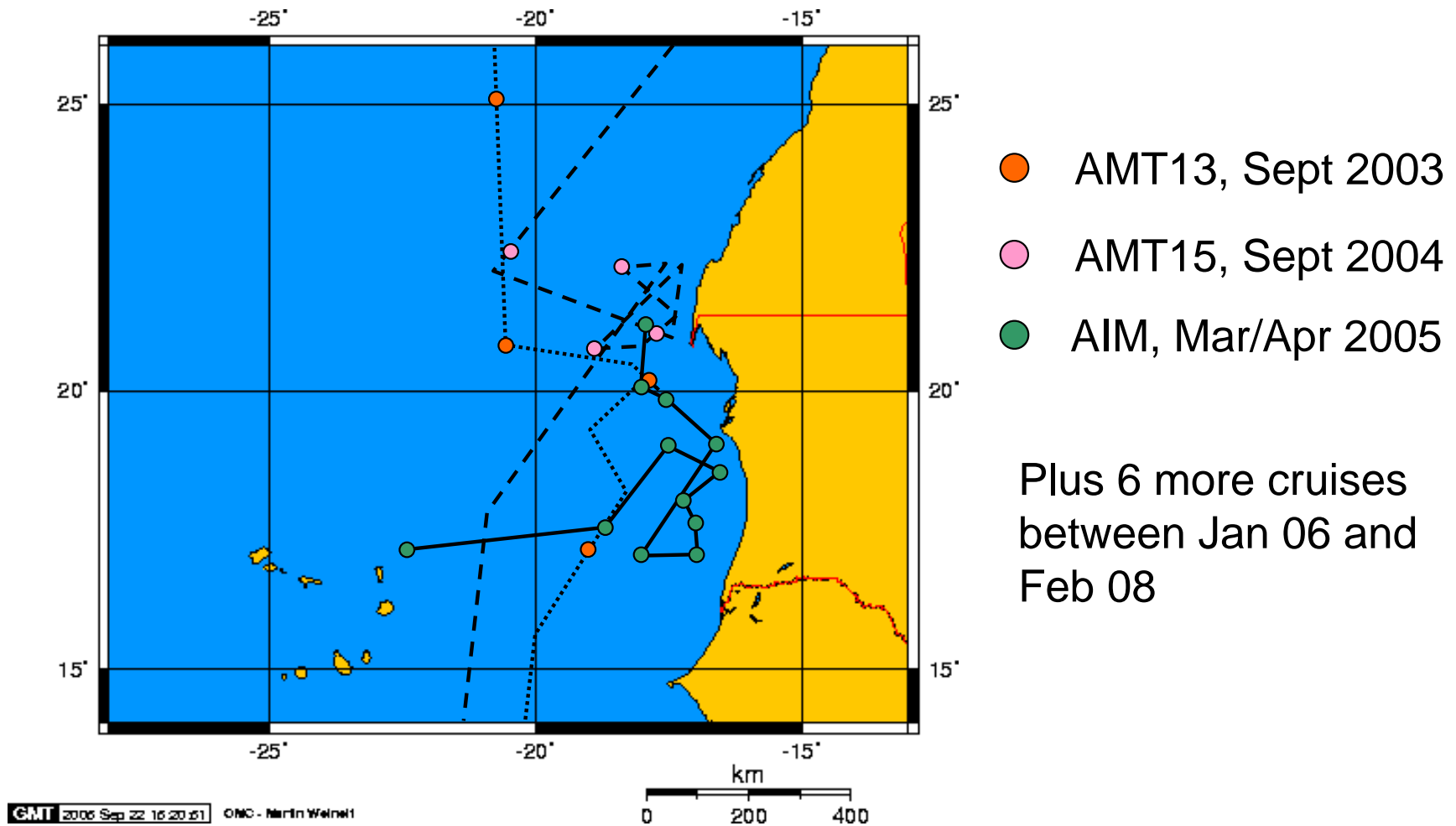
Atmospheric Deposition off West Africa



Alex Baker, UEA

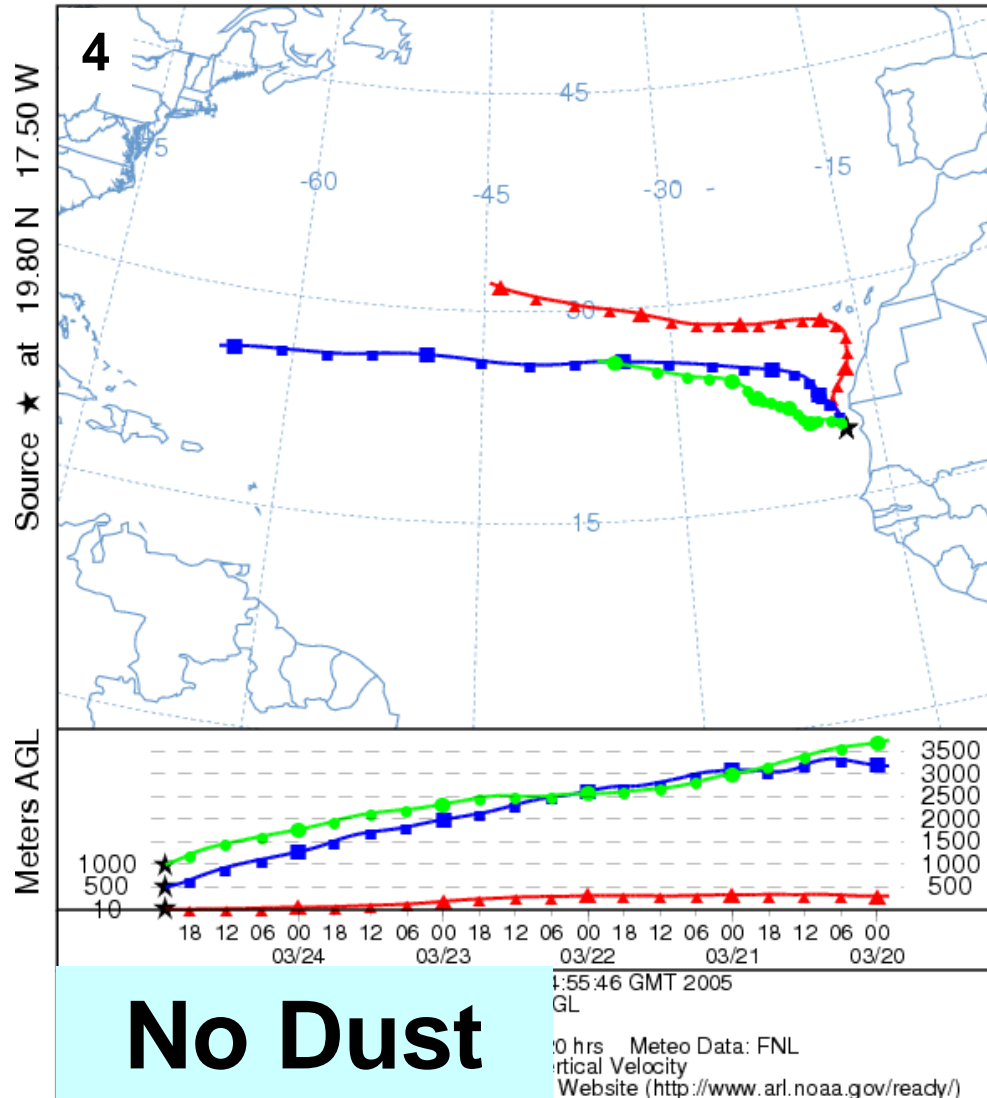


Our studies to date in the region...

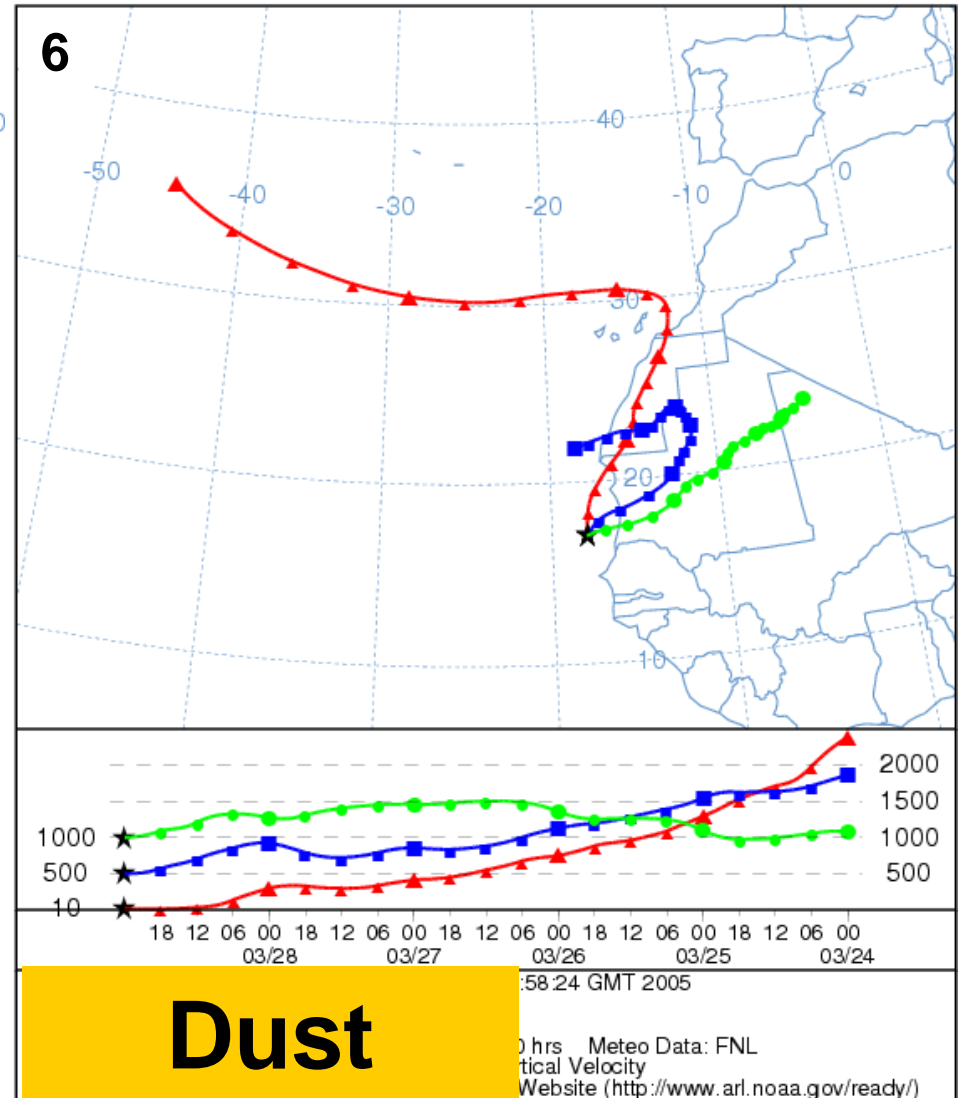


AIM - Air Mass Back Trajectories

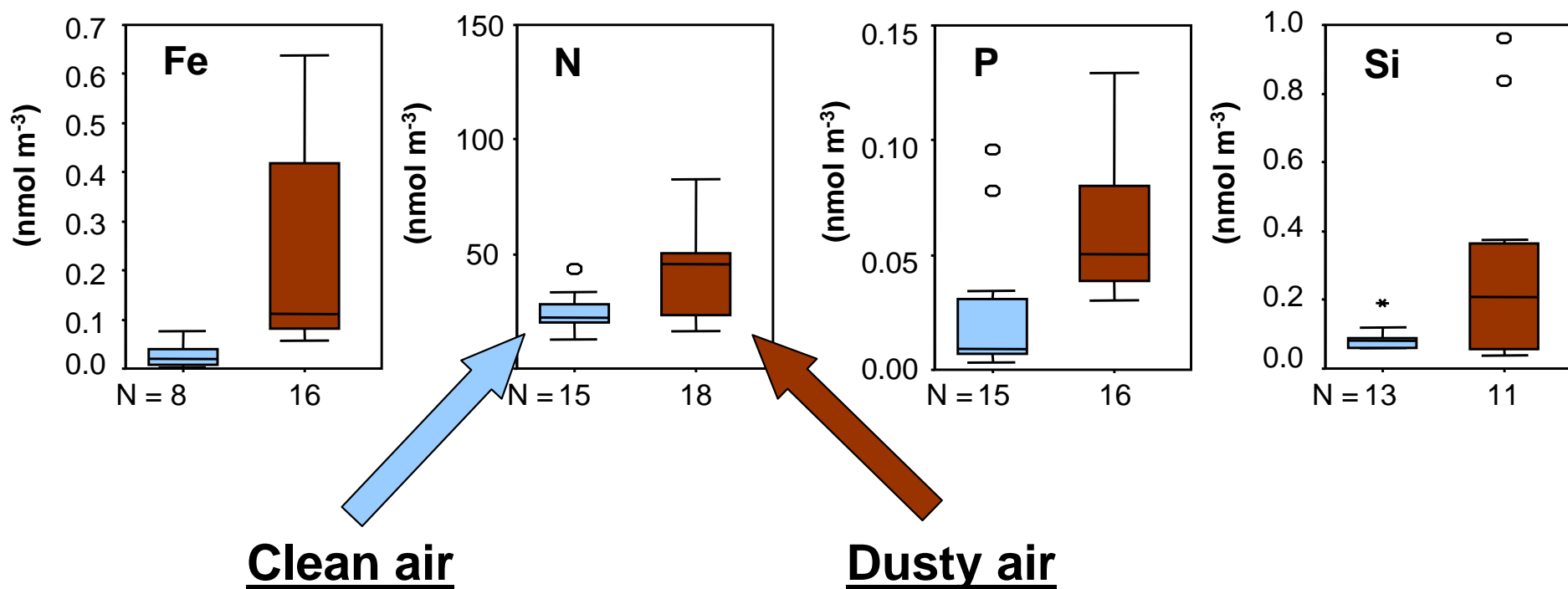
NOAA HYSPLIT MODEL
 Backward trajectories ending at 22 UTC 24 Mar 05
 FNL Meteorological Data



NOAA HYSPLIT MODEL
 Backward trajectories ending at 00 UTC 29 Mar 05
 FNL Meteorological Data



Nutrient concentrations in dry deposition in this region are highly dependent on wind direction



What we can do for you:

Without a berth:

Single filter aerosol collection
Concentrations of soluble Fe,
N, P, Si and other
species
Calculated deposition fluxes

